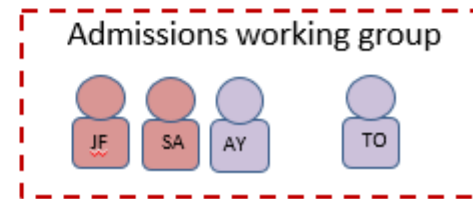
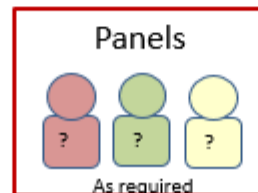
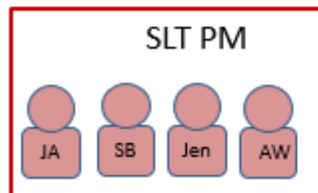
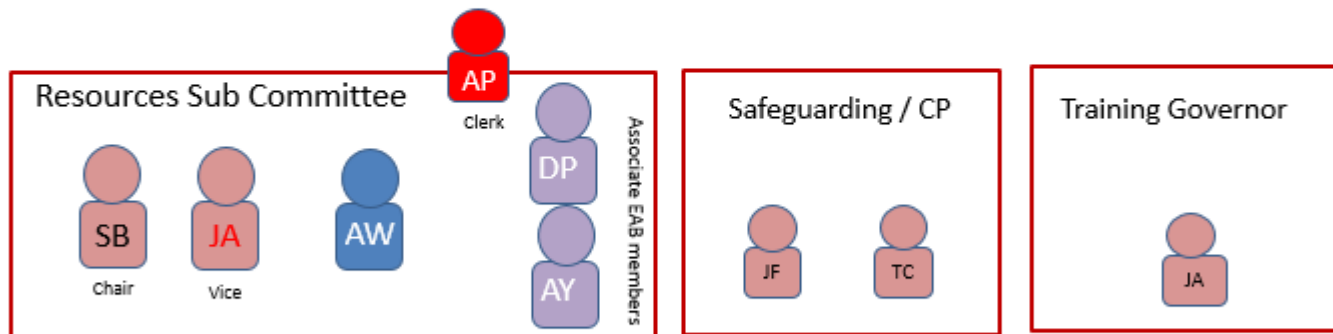
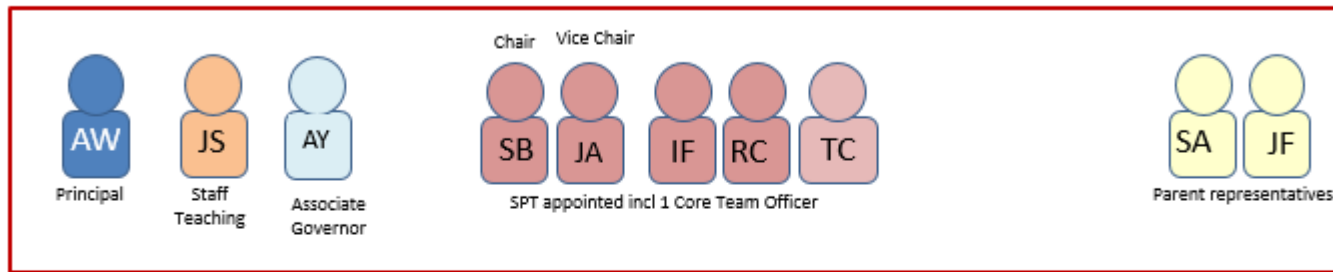
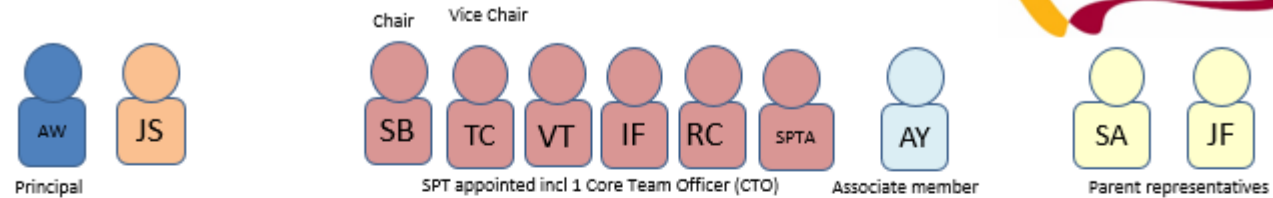


EAB Subcommittees Membership and Remit

Education Advisory Body Organisation



Education Advisory Body Organisation



Resources

Focuses on:

People (HR), Finance and Learning Environment

Aim:

To ensure that Garforth Academy uses its resources ie people, finances, reputation and physical assets in a way that provides the best possible education for its pupils, whilst minimising risk and acting within the law

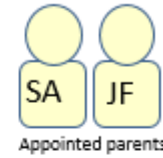
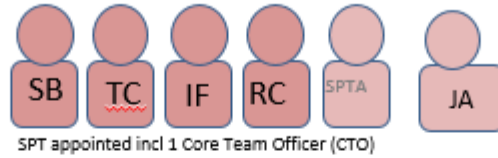
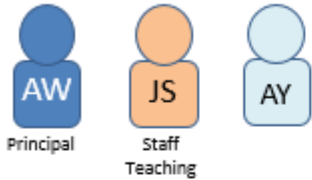
Key performance areas to be reviewed:

- Staffing sustainability eg attrition, sickness, vacancy management
- Financial stability
- Accommodation and resources to meet curriculum needs
- Learners' and staff care, welfare and health and safety
- Risk management eg identification of risk, disaster planning
- Corporate identity eg comms, community partnerships, SPT
- Catering
- Lettings and events
- Academy governance
- School links with parents
- Training and development (EAB and staff)

EAB members attending

Steve Beer, Andy Woodhouse, Jennie Allison, Ian Fox, David Pitchfork
Chair – Steve Beer(as Chair of EAB) Vice Chair – Jennie Allison
Associate EAB members – Anna Young

Education Advisory Body Organisation



SLT Performance Management

Focuses on:
SLT performance management

Aim:
To ensure that Garforth Academy is recognising, progressing and rewarding its SLT staff in the optimal manner

- Key areas to be reviewed:**
- SLT performance management outcomes (for ratification)
 - SLT annual objectives (for information)

EAB members attending
Steve Beer(as Chair), Jennie Allison(as Vice Chair), Sue Ahmed
Andy Woodhouse

Chair – Steve Beer(as Chair of EAB)

Admissions working group

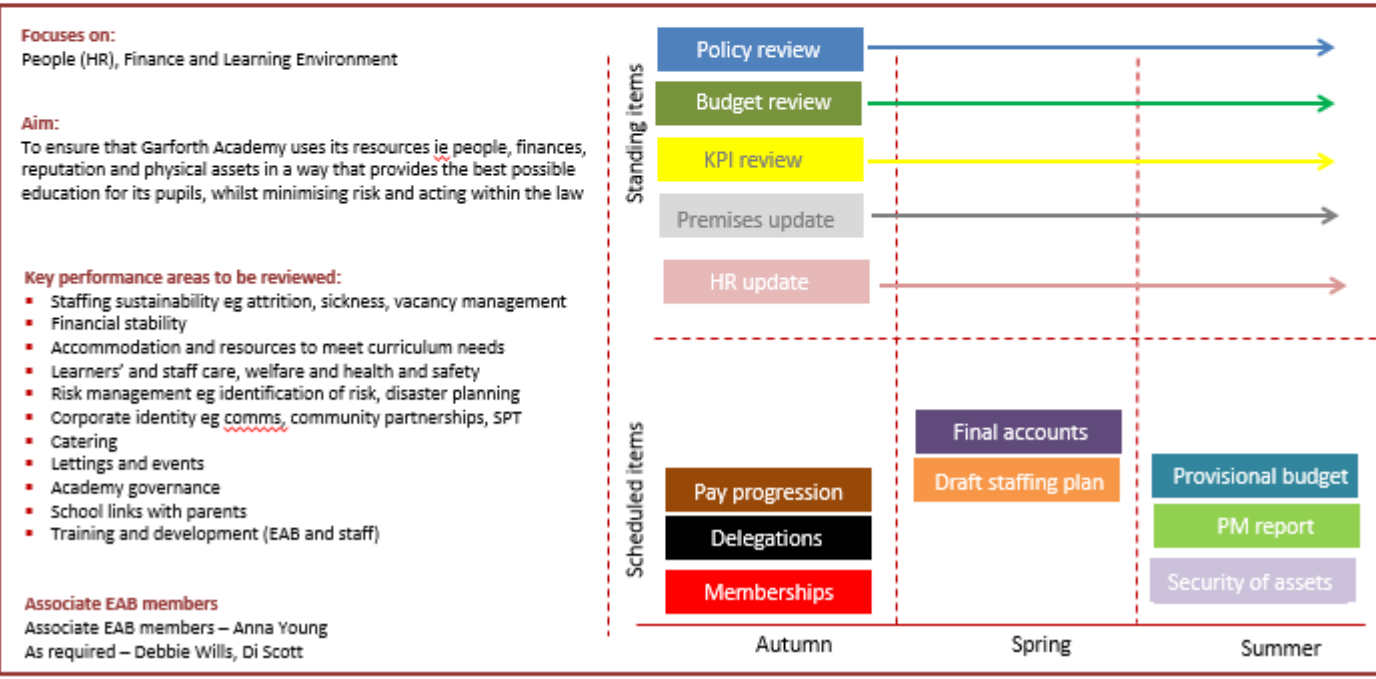
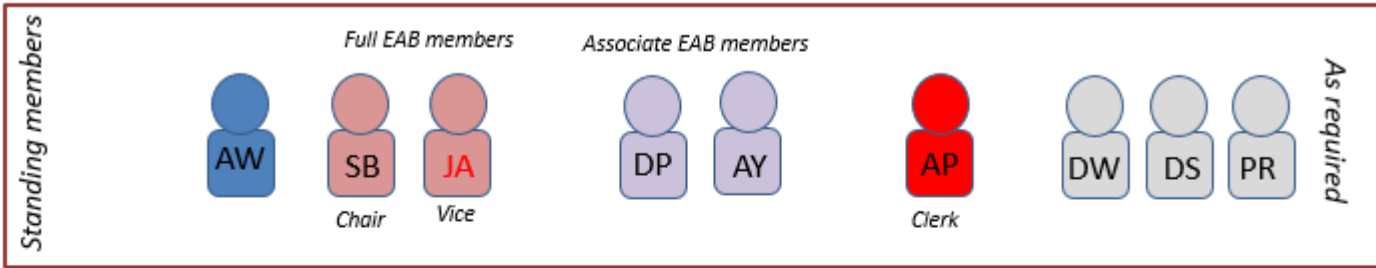
Focuses on:
Review of the Admissions Policy

Aim:
To review the Admissions Policy in light of legislative or procedural changes and taking into account the outcome of the annual school admissions round in order to make recommendations to the Standards Committee around any changes to be considered

- Key areas to be reviewed:**
- Current Admissions Policy

EAB members attending
Julie Francis, Sue Ahmed, Anna Young, Leigh Barber and Tom O'Reilly

Resources committee organisation



Resources Committee policy review schedule

